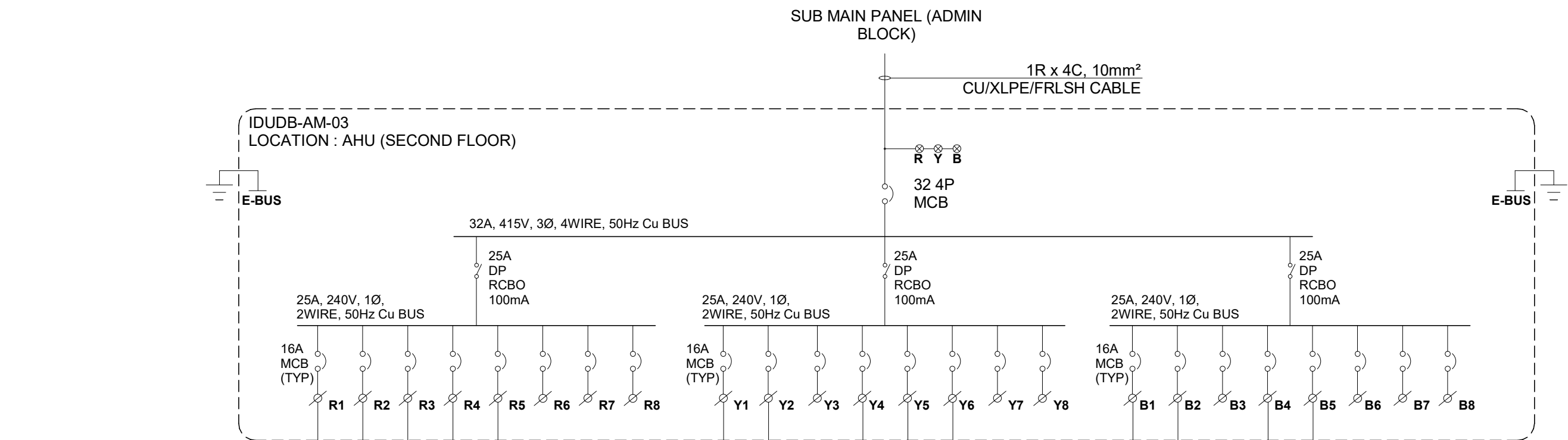


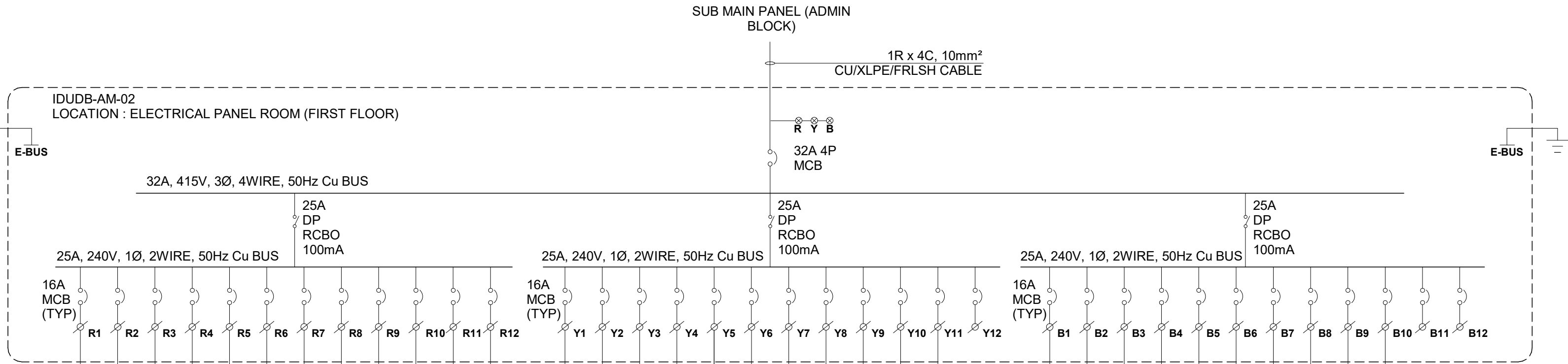
1 #4 mm² Cu. FS wire for Phase
1 #4 mm² Cu. FS wire for Neutral
1 #4 mm² Cu. FS wire for Earth

SYMBOL	DESCRIPTION	KW	TOTAL QTY	R1	R2	R3	R4	R5	R6	R7	R8	Y1	Y2	Y3	Y4	Y5	Y6	Y7	Y8	B1	B2	B3	B4	B5	B6	B7	B8
	UPS 6A	0.10	1											1													
	UPS 6A (Hooter)	0.10	4						4																		
	UPS 2nos of 6A	0.20	7			1											2										
	UPS 6/16A	0.30	5	2												1	1										
	UPS 16A Feeder	1.00	6																								
	Connected load		0.60		0.20	1.00	1.00	0.40				0.20	0.20	0.10	1.00	1.00	0.40			0.20	0.60	0.20	1.00	0.30	1.00		
	Diversity		0.3		0.8	0.6	0.0	0.6				0.3	0.3	0.6	0.0	0.6	0.6			0.3	0.8	0.8	0.6	0.6	0.6		
	Demand Load		0.18		0.16	0.60	0.00	0.24				0.06	0.06	0.06	0.00	0.60	0.24			0.06	0.48	0.16	0.60	0.18	0.60		
	Primary Point (1P)	17	1		1	1	1	1				1	1	1	1	1	1			1	1	1	1	1	1		
	Secondary Point (2P)	6	1		0	0	0	3				0	0	0	0	0	1			0	0	0	0	0	0		
	Total Connected Load	9.40 kW						3.20 kW								2.90 kW											
	Total Demand Load	3.88 kW						1.18 kW								1.02 kW											
	Area served				RECR D NG	SPAR E	DCC OFFIC E WORK STATION	DCC OFFIC E BMS (W)	DCC OFFIC E ETHR NET SWITC H (S)	HOOT ER	SPAR E	SPAR E	MEETI NG ROOM	BOAR D ROOM	ELE ROOM (LCP-A M-03)	DCC OFFIC E BMS (S)	DCC OFFIC E NET SWITC H (W)	BOAR D ROOM	SPAR E	SPAR E	MEETI NG ROOM	DCC OFFIC E WORK STATION	DCC OFFIC E ETHR NET SWITC H (W)	DCC OFFIC E PRINT ER	DCC OFFIC E PLC (S)	SPAR E	SPAR E




1 #2.5 mm² Cu. FRLSH wire for Phase
1 #2.5 mm² Cu. FRLSH wire for Neutral
1 #2.5 mm² Cu. FRLSH wire for Earth

SYMBOL	DESCRIPTION	KW	TOTAL QTY	R1	R2	R3	R4	R5	R6	R7	R8	Y1	Y2	Y3	Y4	Y5	Y6	Y7	Y8	B1	B2	B3	B4	B5	B6	B7	B8
	16A Single Phase (FAN)	-	3					1								1											
	16A Single Phase (IDU)	-	12	1	1	1	1					1	1	1	1	1				1	1						
	Connected load IN kw		0.11	0.11	0.05	0.03	0.75					0.11	0.11	0.03	0.03	0.18	0.05			0.11	0.05		0.03	0.18			
	Diversity		0.80	0.80	0.80	0.80	0.73					0.80	0.80	0.80	0.80	0.67	0.80			0.80	0.80		0.80	0.67			
	Demand Load in KW		0.09	0.09	0.04	0.02	0.55					0.09	0.09	0.02	0.02	0.12	0.04			0.09	0.04		0.02	0.12			
	Primary Point (1P)	15	1	1	1	1	1					1	1	1	1	1	1			1	1		1	1			
	Secondary Point (2P)	0	0	0	0	0	0					0	0	0	0	0	0			0	0		0	0			
	Total Connected Load	1.93 kW						1.05 kW								0.51 kW											
	Total Demand Load	1.44 kW						0.79 kW								0.38 kW											
	Area served				BOAR D ROOM (IDU/S L/51)	MEETI NG (IDU/S L/52)	AFC STOR E (IDU/S L/46)	RECR EATIO NAL (IDU/S L/56)	TOILE T STAFF (VEF/S L/18)	SPAR E	SPAR E	SPAR E	BOAR D ROOM (IDU/S L/50)	MEETI NG (IDU/S L/53)	RECR EATIO NAL (IDU/S L/54)	RECR EATIO NAL (IDU/S L/53)	AFC STOR E (IDU/S L/19)	BOAR D ROOM (IDU/S L/48)	SPAR E	SPAR E	BOAR D ROOM (IDU/S L/49)	AFC STOR E (IDU/S L/47)	RECR EATIO NAL (IDU/S L/55)	ELE ROOM (VEF/S L/20)	SPAR E	SPAR E	SPAR E



1 #4 mm² Cu. FRLSH wire for Phase
1 #4 mm² Cu. FRLSH wire for Neutral
1 #4 mm² Cu. FRLSH wire for Earth

SYMBOL	DESCRIPTION	KW	TOTAL QTY	R1	R2	R3	R4	R5	R6	R7	R8	R9	R10	R11	R12	Y1	Y2	Y3	Y4	Y5	Y6	Y7	Y8	Y9	Y10	Y11	Y12	B1	B2	B3	B4	B5	B6	B7	B8	B9	B10	B11	B12	
	16A Single Phase (IDU)	-	37																																					
	Connected load IN kw			0.11	0.11	0.05	0.03	0.05	0.05	0.22	0.03	0.18	0.19	0.19	0.11	0.11	0.10	0.75	0.03	0.05	0.05	0.10	0.18	0.19	0.19	0.22	0.12	0.19	0.03	0.03	0.05	0.05	0.05	0.18	0.55	0.19				
	Diversity			0.80	0.80	0.80	0.80	0.80	0.80	0.80	0.80	0.67	0.80	0.80	0.80	0.80	0.80	0.73	0.80	0.80	0.80	0.80	0.67	0.80	0.80	0.80	0.80	0.80	0.80	0.80	0.80	0.80	0.80	0.67	0.84	0.00				
	Demand Load in KW			0.09	0.09	0.04	0.02	0.04	0.04	0.18	0.02	0.12	0.15	0.15	0.09	0.09	0.08	0.55	0.02	0.04	0.04	0.08	0.12	0.15	0.00	0.18	0.10	0.15	0.02	0.02	0.04	0.04	0.04	0.12	0.46	0.00				
	Primary Point (1P)	33		1	1	1	1	1	1	1	1	1	1	1	1	1	1	1	1	1	1	1	1	1	1	1	1	1	1	1	1	1	1	1	1	1	1			
	Secondary Point (2P)	1		0	0	0	0	0	0	0	1	0	0	0	0	0	1	0	0	0	0	1	0	0	0	1		0	0	0	0	0	0	0	0	0	0			
	Total Connected Load	4.73 kW									1.32 kW										1.97 kW																			
	Total Demand Load	3.38 kW									1.03 kW										1.35 kW																			
	Area served				EQUIP MENT ROOM (IDU/F L/16)	EQUIP MENT ROOM (IDU/F L/18)	OPEN OFFIC E (IDU/F L/34)	DISC ROOM (IDU/F L/25)	OPEN OFFIC E (IDU/F L/39)	OPEN OFFIC E (IDU/F L/36)	DCC OFFIC E (IDU/F L/28&29)	DISC ROOM (IDU/F L/43)	STAFF TOILE T (VEF/F L/12)	CER ROOM (IDU/F L/21)	SER. ROOM (IDU/F L/24B)	EQUIP MENT ROOM (IDU/F L/20)	EQUIP MENT ROOM (IDU/F L/17)	OPEN OFFIC E (IDU/F L/32&33)	TOILE T1 &2 (VEF/F L/13)	DISC. ROOM (IDU/F L/45)	OPEN OFFIC E (IDU/F L/40)	OPEN OFFIC E (IDU/F L/37)	OPEN OFFIC E (IDU/F L/30&31)	PANT RY (VEF/F L/14)	CER ROOM (IDU/F L/22A)	CER ROOM (IDU/F L/22B)	DCC OFFIC E (IDU/F L/26&27)	SPAR E												
																	</																							